

Catharina Söderström, Rune Arntsing, Karin Lindh

Quarterly report on measurements of radionuclides in ground level air in Sweden.

Third quarter 2004.



SWEDISH DEFENCE RESEARCH AGENCY

Systems Technology
SE-164 90 Stockholm

FOI-R--1632--SE

April 2005

ISSN 1650-1942

User report

Catharina Söderström, Rune Arntsing, Karin Lindh

Quarterly report on measurements of radionuclides in ground level air in Sweden. Third quarter 2004.

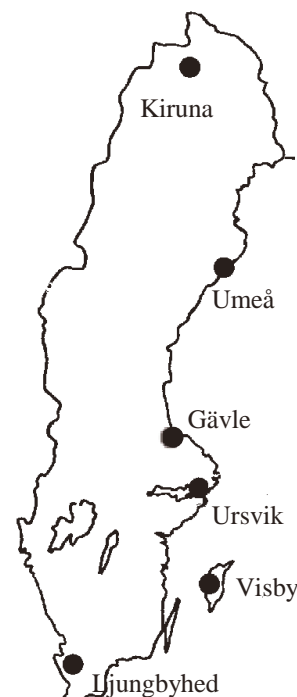
Issuing organization FOI – Swedish Defence Research Agency Systems Technology SE-164 90 Stockholm	Report number, ISRN FOI-R--1632--SE	Report type User report
	Research area code 3. NBC Defence and other hazardous substances	
	Month year April 2005	Project no. E62001
	Sub area code 31 Nuclear Defence Research	
	Sub area code 2	
Author/s (editor/s) Catharina Söderström Rune Arntsing Karin Lindh	Project manager Katarina Wilhelmsen	
	Approved by Monica Dahlén	
	Sponsoring agency Swedish Radiation Protection Authority	
	Scientifically and technically responsible	
Report title Quarterly report on measurements of radionuclides in ground level air in Sweden. Third quarter 2004.		
Abstract (not more than 200 words) Filtering of ground level air is performed weekly at six different locations in Sweden: Kiruna, Umeå, Gävle, Ursvik, Visby and Ljungbyhed. The filters are pressed and the contents of different radionuclides are measured by gamma spectroscopy. Precipitation is also collected at four of the stations: Kiruna, Gävle, Ursvik and Ljungbyhed, the samples are ashed and the contents of radionuclides are measured. The levels of Be-7 and Cs-137 in air and precipitation are presented for the different stations. Other antropogenic radionuclides detected, if any are also presented.		
Keywords Airborne radionuclides, deposition, ⁷ Be, ¹³⁷ Cs, ¹³¹ I, ¹⁹² Ir		
Further bibliographic information	Language English	
ISSN 1650-1942	Pages 8 p.	
	Price acc. to pricelist	

Utgivare Totalförsvarets Forskningsinstitut - FOI Systemteknik 164 90 Stockholm	Rapportnummer, ISRN FOI-R--1632--SE	Klassificering Användarrapport
	Forskningsområde 3. NBC Defence and other hazardous substances	
	Månad, år April 2005	Projektnummer E62001
	Delområde 31 Nuclear Defence Research	
	Delområde 2	
Författare/redaktör Catharina Söderström Rune Amtsing Karin Lindh	Projektledare Katarina Wilhelmsen	
	Godkänd av Monica Dahlén	
	Uppdragsgivare/kundbeteckning SSI	
	Tekniskt och/eller vetenskapligt ansvarig	
Rapportens titel (i översättning) Radionuklider i markluft i Sverige. Kvartalsrapport, tredje kvartalet 2004.		
Sammanfattning (högst 200 ord) Stationer för filtrering av markluft finns på sex olika ställen i Sverige: Kiruna, Umeå, Gävle, Ursvik, Visby och Ljungbyhed. Filtren pressas och analyseras veckovis med hjälp av gammaspektroskopi med germaniumdetektor. Nederbörd samlas in på fyra av dessa stationer: Kiruna, Gävle, Ursvik och Ljungbyhed. Nedbördsproven askas in och mäts med hjälp av gammaspektroskopi. Halterna av Be-7 och Cs-137 presenteras för luft och nederbörd för de olika stationerna. I de fall andra antropogena radionuklider detekteras presenteras även dessa.		
Nyckelord Luftburen radioaktivitet, deposition, ⁷ Be, ¹³⁷ Cs, ¹³¹ I, ¹⁹² Ir		
Övriga bibliografiska uppgifter	Språk Engelska	
ISSN 1650-1942	Antal sidor: 8 s.	
Distribution enligt missiv	Pris: Enligt prislista	

Sampling and analysis procedures

Sampling of ground level air is performed at six different locations in Sweden, as follows:

Kiruna:	67.84° N	20.42° E
Umeå:	63.85° N	20.34° E
Gävle:	60.40° N	17.14° E
Ursvik:	59.39° N	17.96° E
Visby:	57.63° N	18.32° E
Ljungbyhed:	56.08° N	13.23° E



At all stations except at Ursvik, 1000 m³/h of air is filtered through a glass fibre filter (Camfil type CS 5.0). At each station the filters are changed twice weekly (Monday and Thursday or Friday) and sent by mail to our laboratory at Ursvik for measurement and analysis. At Ursvik 1800 m³/h of air is filtered through 2 filters, the filters are changed with a time period of 28 hours.

Weekly samples are made from each station by taking 3/4 of each filter (1/4 of the filter is left for the archive) and compress them together into a small disc (diameter 60 mm, thickness 13 mm). These samples are measured, 3-4 days after the collection, on well shielded High Purity Germanium (HPGe) detectors. From the station at Ursvik, the 12 filters produced per week are assembled in a Marinelli like geometry by pressing them into one circular disc (diameter 94 mm, thickness 16 mm), placed on top of the detector, and into six rectangular bricks (77 mm by 48 mm by 13 mm) placed around the detector.

At four of the stations (Kiruna, Umeå, Ursvik and Ljungbyhed) a small part of the air flow (12m³/h) that has passed the filter is taken through a charcoal cartridge in order to collect gaseous iodine. The cartridges are changed weekly but only analysed if particulate iodine in greater amount has been detected in the filter.

The stations at Kiruna, Gävle, Ursvik and Ljungbyhed are each equipped with a big stainless steel funnel (1m radius) to collect precipitation. Which is passed through a cartridge consisting of a filter part, an anion part and a cation part. The cartridges are changed weekly and sent by mail to our laboratory. Four samples are combined to a monthly sample by ashing. The samples are measured on HPGe detectors. From these measurements the total deposition is calculated.

Radionuclides seen in the filters are normally only the naturally occurring radon daughters and ⁷Be. Most of our stations also detect ¹³⁷Cs, which is due to resuspension of the Chernobyl fallout. In tables I and II the concentrations of ⁷Be and ¹³⁷Cs are presented. The depositions at the stations where we collect precipitation are presented in table III. Sometimes we also detect other anthropogenic radionuclides and in that case these are presented in Table IV.

Table I

⁷Be concentrations in Sweden, third quarter 2004

Week starting	Kiruna	Umeå	Gävle	Ursvik	Visby	Ljungbyhed
28-jun	2170 (0.2)	1940 ⁽⁴⁾ (0.2)	2100 (0.2)	2530 (0.1)	2130 (0.2)	2020 (0.2)
5-jul	1620 (0.2)	1420 ⁽⁵⁾ (0.2)	1830 (0.2)	2150 (0.1)	2290 (0.2)	2620 (0.1)
12-jul	1970 (0.2)	2110 ⁽⁶⁾ (0.2)	2290 (0.2)	2680 (0.1)	2190 (0.2)	2430 (0.2)
19-jul	3070 (0.1)	2780 ⁽⁷⁾ (0.1)	2240 (0.3)	3440 (0.1)	2870 (0.2)	2280 (0.2)
26-jul	4070 (0.1)	5610 ⁽⁸⁾ (0.2)	2860 (0.2)	3410 (0.1)	3030 (0.2)	2160 ⁽¹⁴⁾ (0.2)
2-aug	3780 (0.1)	3790 ⁽⁹⁾ (0.2)	3810 (0.2)	5350 (0.1)	5190 (0.2)	3920 ⁽¹⁵⁾ (0.1)
9-aug	1730 (0.2)	2320 ⁽¹⁰⁾ (0.1)	2990 (0.1)	3550 (0.1)	3770 (0.2)	3920 ⁽¹⁶⁾ (0.2)
16-aug	1050 ⁽¹⁾ (0.2)	1700 ⁽¹¹⁾ (0.2)	2190 (0.2)	2750 (0.1)	3090 (0.2)	2980 (0.1)
23-aug	1360 ⁽²⁾ (0.2)	1690 (0.2)	1850 ⁽¹²⁾ (0.2)	2380 (0.1)	2550 (0.2)	2710 (0.1)
30-aug	1740 (0.2)	3250 (0.2)	2590 ⁽¹³⁾ (0.3)	3020 (0.1)	2400 (0.2)	2810 (0.1)
6-sep	1570 (0.2)	2530 (0.2)	3010 (0.2)	3490 (0.1)	3270 (0.2)	3240 (0.1)
13-sep	500 ⁽³⁾ (0.4)	1910 (0.2)	2590 (0.2)	3030 (0.1)	2910 (0.2)	2950 (0.1)
20-sep	570 (0.3)	830 (0.3)	950 (0.3)	1160 (0.2)	1030 (0.3)	930 (0.2)
27-sep	1190 (0.2)	1150 (0.2)	1010 (0.3)	1340 (0.2)	1320 (0.3)	2020 (0.2)

Values are given in $\mu\text{Bq}/\text{m}^3$.

Error estimates (1σ %) are given in brackets.

¹⁾ Eight days filter, 16 - 24/8

²⁾ Six days filter, 24 - 30/8

³⁾ Six days filter, 14 - 20/9

⁴⁾ Eight days filter, 29/6 - 6/7

⁵⁾ Six days filter, 6 - 12/7

⁶⁾ Eight days filter, 12 - 20/7

⁷⁾ Nine days filter, 20 - 29/7

⁸⁾ Five days filter, 29/7 - 3/8

⁹⁾ Six days filter, 3 - 9/8

¹⁰⁾ Eight days filter, 9 - 17/8

¹¹⁾ Six days filter, 17 - 23/8

¹²⁾ Eight days filter, 23 - 31/8

¹³⁾ Six days filter, 31/8 - 6/9

¹⁴⁾ Four days filter, 26 - 30/7

¹⁵⁾ Eleven days filter, 30/7 - 10/8

¹⁶⁾ Six days filter, 10 - 16/8

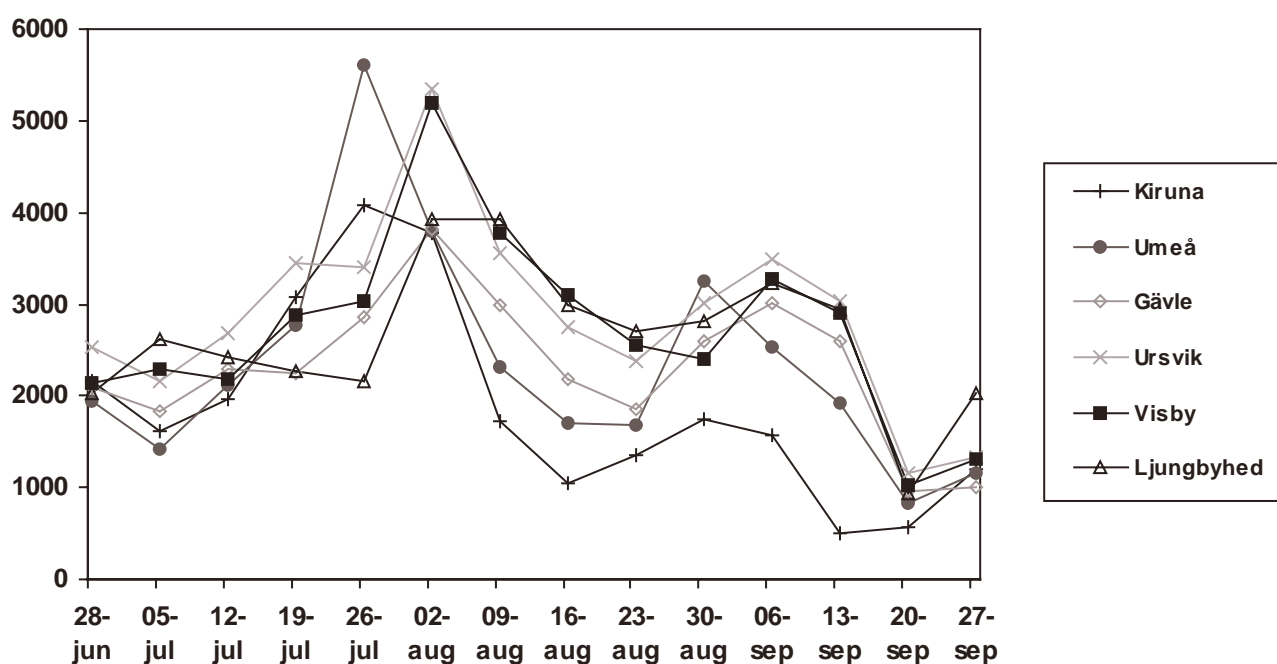


Table II

¹³⁷Cs concentrations in Sweden, third quarter 2004

<i>Week starting</i>	<i>Kiruna</i>	<i>Umeå</i>	<i>Gävle</i>	<i>Ursvik</i>	<i>Visby</i>	<i>Ljungbyhed</i>
28-jun	0.8 (8)	5.3 ⁽⁴⁾ (2)	4.7 (2)	0.4 (12)	0.4 (31)	0.2 (21)
5-jul	1.1 (6)	3.7 ⁽⁵⁾ (2)	4.0 (2)	0.2 (19)	0.6 (19)	0.1 (31)
12-jul	0.5 (10)	3.4 ⁽⁶⁾ (2)	3.8 (2)	0.4 (14)	0.1 (72)	0.4 (18)
19-jul	0.6 (10)	6.1 ⁽⁷⁾ (2)	2.7 (6)	0.7 (8)	0.5 (21)	0.3 (17)
26-jul	0.4 (14)	6.8 ⁽⁸⁾ (3)	4.0 (4)	0.9 (7)	0.6 (21)	<0.2 ⁽¹⁴⁾
2-aug	0.5 (13)	4.6 ⁽⁹⁾ (2)	3.5 (5)	1.5 (5)	1.8 (9)	0.6 ⁽¹⁵⁾ (7)
9-aug	0.1 (30)	4.4 ⁽¹⁰⁾ (2)	3.1 (3)	0.9 (6)	1.1 (11)	0.4 ⁽¹⁶⁾ (22)
16-aug	0.3 ⁽¹⁾ (12)	4.0 ⁽¹¹⁾ (2)	2.7 (3)	0.3 (19)	0.7 (24)	0.2 (24)
23-aug	0.3 ⁽²⁾ (19)	5.9 (2)	3.6 ⁽¹²⁾ (2)	0.3 (12)	0.4 (25)	0.3 (20)
30-aug	0.6 (9)	6.5 (2)	3.7 ⁽¹³⁾ (5)	0.4 (13)	0.5 (26)	0.3 (15)
6-sep	0.2 (25)	5.9 (2)	4.6 (4)	0.6 (9)	0.5 (19)	0.5 (10)
13-sep	0.1 ⁽³⁾ (47)	8.1 (1)	3.4 (6)	0.5 (11)	0.5 (24)	0.6 (10)
20-sep	0.3 (18)	10.8 (1)	7.5 (2)	0.9 (6)	0.5 (22)	0.4 (14)
27-sep	0.6 (9)	8.1 (1)	9.0 (1)	1.6 (4)	1.0 (15)	1.1 (6)

Values are given in $\mu\text{Bq}/\text{m}^3$.

Error estimates (1σ %) are given in brackets.

¹⁾ Eight days filter, 16 - 24/8

²⁾ Six days filter, 24 - 30/8

³⁾ Six days filter, 14 - 20/9

⁴⁾ Eight days filter, 29/6 - 6/7

⁵⁾ Six days filter, 6 - 12/7

⁶⁾ Eight days filter, 12 - 20/7

⁷⁾ Nine days filter, 20 - 29/7

⁸⁾ Five days filter, 29/7 - 3/8

⁹⁾ Six days filter, 3 - 9/8

¹⁰⁾ Eight days filter, 9 - 17/8

¹¹⁾ Six days filter, 17 - 23/8

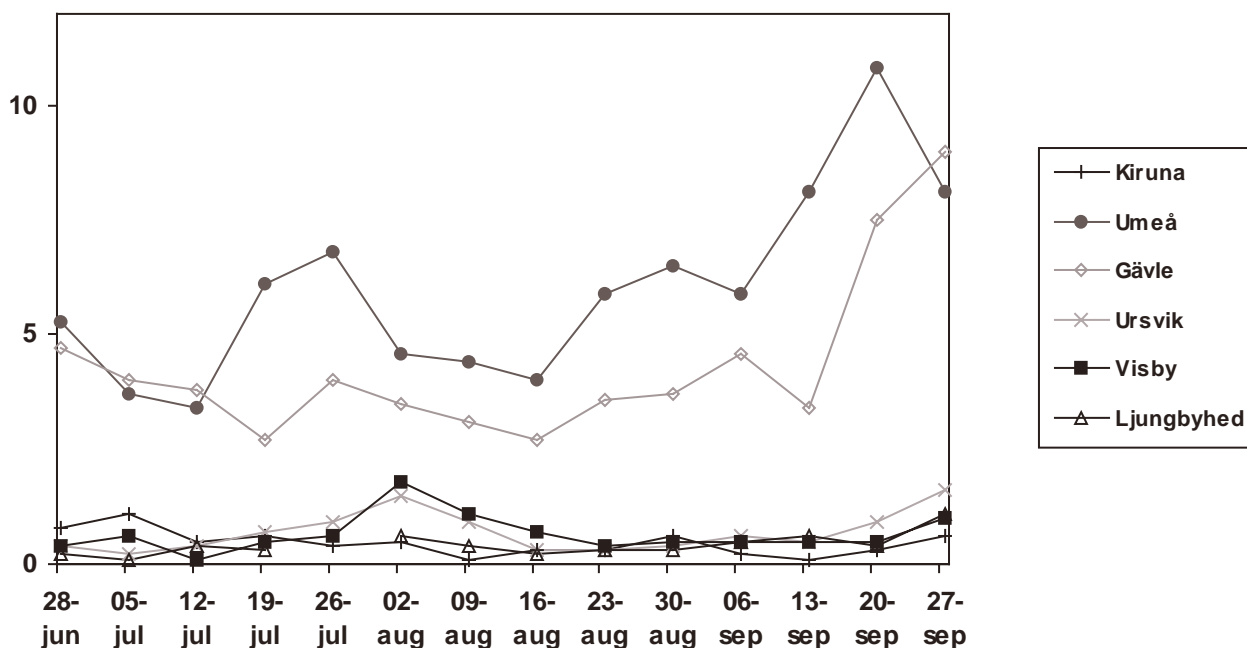
¹²⁾ Eight days filter, 23 - 31/8

¹³⁾ Six days filter, 31/8 - 6/9

¹⁴⁾ Four days filter, 26 - 30/7

¹⁵⁾ Eleven days filter, 30/7 - 10/8

¹⁶⁾ Six days filter, 10 - 16/8



*Table III**Deposition measurements, third quarter 2004**Kiruna*

<i>Weeks</i>	<i>Period</i>	<i>⁷Be</i>	<i>¹³⁷Cs</i>	<i>Precipitation (mm)</i>
24 - 27	7/6 – 5/7	10600 (1.0)	21 (26)	36.3
28 - 31	5/7 – 2/8	90300 (0.3)	93 (9)	145.8
32 - 35	2/8 – 30/8	82900 (0.3)	26 (21)	98.7
36 - 39	30/8 – 27/9	73700 (0.3)	39 (15)	114.6

Gävle

<i>Weeks</i>	<i>Period</i>	<i>⁷Be</i>	<i>¹³⁷Cs</i>	<i>Precipitation (mm)</i>
27 - 30	28/6 – 26/7	46800 (0.4)	104 (8)	54.7
31 - 34	26/7 – 23/8	55500 (0.3)	70 (5)	27.3
35 - 38	23/8 – 20/9	47100 (0.4)	109 (7)	62.0

Ursvik

<i>Weeks</i>	<i>Period</i>	<i>⁷Be</i>	<i>¹³⁷Cs</i>	<i>Precipitation (mm)</i>
26 - 29	21/6 – 19/7	64500 (0.3)	28 (22)	60.8
30 - 33	19/7 – 16/8	63800 (0.3)	43 (15)	34.4
34 - 37	16/8 – 13/9	40800 (0.5)	18 (34)	37.6

Ljungbyhed

<i>Weeks</i>	<i>Period</i>	<i>⁷Be</i>	<i>¹³⁷Cs</i>	<i>Precipitation (mm)</i>
25 - 28	14/6 – 12/7	135400 (0.2)	36 (17)	124.0
29 - 32	12/7 – 10/8	103400 (0.3)	<14	75.8
33 - 36	10/8 – 6/9	72800 (0.3)	30 (22)	45.8
37 - 40	6/9 – 4/10	73800 (0.3)	28 (22)	53.8

Values are given in mBq/m².

Error estimates (1σ %) are given in brackets.

*Table IV****Other anthropogenic radionuclides detected,
third quarter 2004***

<i>Week starting</i>	<i>Station</i>	<i>Isotope</i>	<i>Concentration</i>	<i>Note</i>
28-jun	Gävle	¹³¹ I	0.6 (28)	(1)
9-aug	Gävle	¹³¹ I	1.4 (14)	(1)
16-aug	Gävle	¹³¹ I	0.5 (25)	(1)
20-sep	Ursvik	¹⁹² Ir	8.5 (1.7)	(2)

Values are given in $\mu\text{Bq}/\text{m}^3$.

Error estimates (1σ %) are given in brackets.

- (1) The activities of ¹³¹I found in Gävle have been shown to correspond to administration of cancer treatment doses for thyroidea cancer at the Gävle-Sandviken County Hospital (ref. Erlandsson et al., "I-131 in air filters at Gävle", presented at NSRP 13th meeting in Åbo, 25-29 August 2002).
- (2) The activities of ¹⁹²Ir found in Ursvik have been shown to correspond to an accidental release of ¹⁹²Ir at the production site at Studsvik Nuclear AB at the 20th of September (ref. Söderström et al, "Finding of Ir-192 in surface air", FOI-report, to be published).